

>> ALWAYS A STEP
AHEAD – METAL PROCESSING
BY LISSMAC

LISSMAC
METAL PROCESSING

>> TECHNOLOGICAL LEADER

LISSMAC has driven innovation in the metal processing industry with the development of a proprietary line of machines for oxide removal, grinding, and deburring. The highly effective method of processing inside and outside edges on both sides in a single pass is unique to the market.

Today, LISSMAC is known for its outstanding innovation, technological competence, and first-rate systems- and service solutions from a single source.

>> MILESTONES

2002: First drafts of a machine for double-sided processing in a single pass

2003: The innovative processing method is patented and the first SBM-B is introduced to the market.

2004: Edge rounding capabilities are added through the development of the SBM-S.

2006: The SBM-XL G2S2 for double-sided deburring and edge rounding of thick plates is introduced. LISSMAC's unique machine technology is awarded an Innovation Prize.

2009: Under new design, and with the expansion of the tooling systems to include a slag removal process, the „new generation“ emerges.

2012: Acquisition of Buetfering's metal processing division leads to the integration of the Steelmaster Premium brand into the LISSMAC Portfolio. All applications (oxide removal, deburring, edge rounding, slag removal, and surface finishing) are now offered from a single source.

2015: The innovative small parts machine SBM-XS G1E1 allows for double-sided processing of small parts in a single pass.

2016: With the introduction of the ECOline, LISSMAC for the first time offers entry-level machines - made in Germany.

Thanks to its continuous innovative capabilities, LISSMAC is today amongst the leading suppliers of metal processing solutions.



OUR MISSION – WE WANT YOU TO BE SUCCESSFUL: LISSMAC STANDS FOR INNOVATION, EXPERIENCE, AND QUALITY. AS A MARKET LEADER AND INVENTOR OF DOUBLE-SIDED SHEET METAL PROCESSING IN A SINGLE PASS, WE STRIVE TO ALWAYS BE A STEP AHEAD. THIS AMBITION LEADS US TO EXPLORE NEW POSSIBILITIES ON A DAILY BASIS.

Klaus Kiefer,
Managing Director, LISSAMC
Maschinenbau GmbH



>> RESEARCH AND DEVELOPMENT

We realize that only a vigorous research and development program can support our continuous innovative lead. In collaboration with our customers and professional end users, we drive market oriented development, supported by our experienced partners, through field tests, and by our proverbial Swabian inventive spirit.

>> HIGH VERTICAL MANUFACTURING INTEGRATION

Not only do we possess a full in-house engineering- and construction department, we also own a cutting-edge production facility, with an innovative machine park. Our highly educated and trained employees ensure premium quality - „Made in Germany“.

>> HIGHLY TRAINED EMPLOYEES

We provide our employees with numerous opportunities for development and advancement, in a fascinating environment. Our specially trained personnel is offered a variety of continuous education programs, as we know that any company can only be as good as its people.



OUR ASPIRATION – WE STRIVE FOR CONTINUOUS IMPROVEMENT: OUR INNOVATIVE RESEARCH AND DEVELOPMENT DEPARTMENT CHAMPIONS OUR TECHNOLOGICAL LEAD. ALMOST ALL OF OUR MACHINE COMPONENTS ARE MANUFACTURED IN-HOUSE AT OUR LISSMAC HEADQUARTERS IN BAD WURZACH, BY OUR EMPLOYEES, AND WITH UTMOST PRECISION.

LISSMAC USA

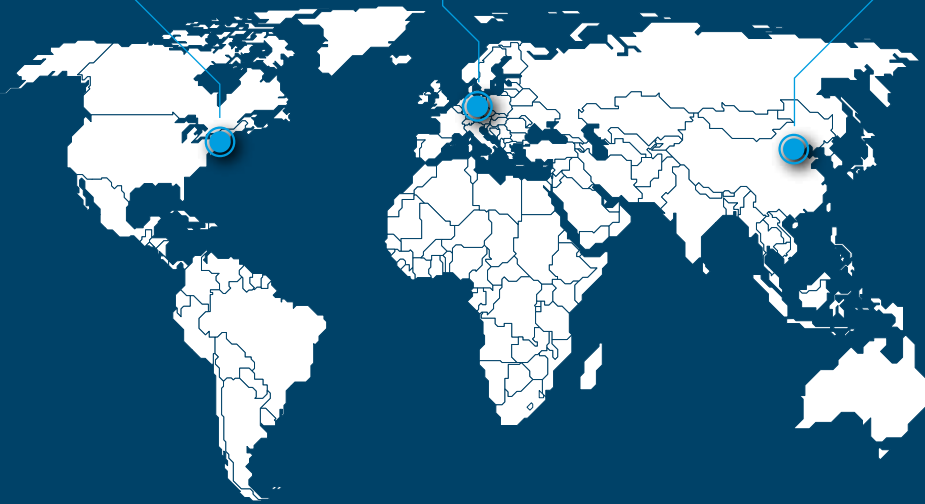
Waterford, New York
Sales and Service

LISSMAC GERMANY

Bad Wurzach und Beckum
Production, Sales, and
Service

LISSMAC CHINA

Tianjin
Sales and Service

**LISSMAC-SERVICE CENTER**

To expertly address the needs of our customers, we offer a dedicated Service Center. Our knowledgeable service staff supports you competently in all areas of product and process engineering.

Our international subsidiaries provide sales and service to our international customers, and ensure global LISSMAC availability.

**SPARE PARTS**

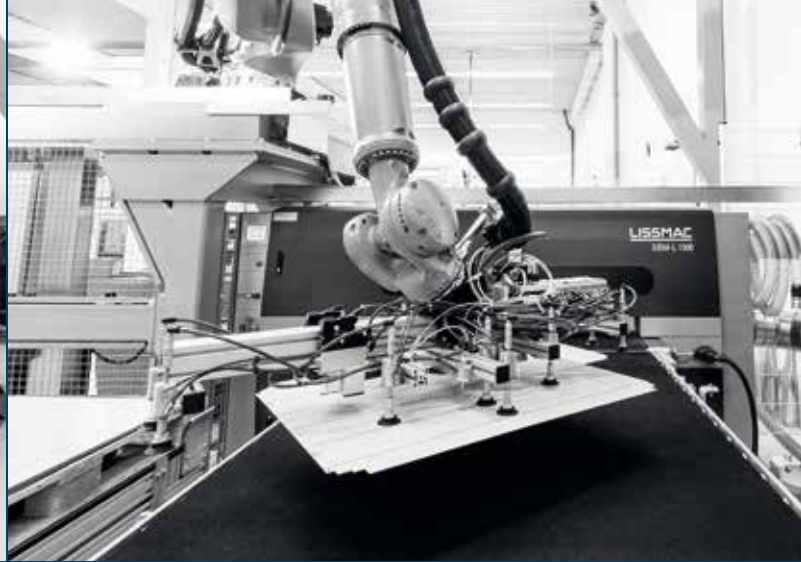
To date, thousands of LISSMAC machines have been placed in the market. We keep an extensive stock of spare parts to ensure quick and easy handling. Additionally, we offer preventative maintenance through our worldwide service network.

**FOUR LOCATIONS**

300 employees worldwide care for our customers at four locations in Germany, the USA, and China. Our international customers appreciate our top quality products - „Made in Germany“.



OUR PROMISE – WE ARE THERE FOR YOU -
WORLDWIDE: WE WILL ALWAYS GIVE OUR BEST
FOR OUR CUSTOMERS, AND ANALYZE YOUR NEEDS
WITH ATTENTION TO DETAIL AND UTMOST
APPRECIATION OF YOUR BUSINESS. WE SUPPORT
OUR CUSTOMERS THROUGHOUT THE ENTIRE
LIFE CYCLE OF OUR PRODUCTS AND OFFER
ECONOMICALLY SOUND, COMPLETE SOLUTIONS
FOR HIGHEST CUSTOMER SATISFACTION.



>> INDIVIDUAL SOLUTIONS

Our customized solutions facilitate work processes worldwide, and simplify our customer's applications on a daily basis.

LISSMAC strives to find an optimal solution, on an individual basis, for every customer application. We analyze your needs with attention to detail and utmost appreciation of your business.

Through the ideas and know-how of our development department, we generate solutions for the highest expectations.

Our flexible range of applications spans from stand-alone machines, all the way to fully integrated automated production lines.

We automate our customers' processes with their highest productivity and profitability in mind. We combine our expertise from all of LISSMAC's business divisions to create integrated comprehensive solutions from a single source.



LISSMAC
SBM-L 1500



OUR MOTIVATION – WE ARE READY TO RISE TO YOUR CHALLENGES: IN OUR CUSTOM PLANT ENGINEERING DIVISION, THROUGH OUR TECHNICIANS AND ENGINEERS, WE DEVELOP INDIVIDUAL SOLUTIONS, CUSTOM TAILORED TO YOUR SPECIFIC REQUIREMENTS.



>> TESTING AND EVALUATION

Experience our unique innovation: send us your parts for sample processing, or feel free to drop by in person.

In collaboration with our experts we have successfully solved thousands of challenging grinding tasks.

Assess our results and compare them to your customers' or production department's requirements.

>> ANALYZING

We continuously perform various analyses regarding our processing results. Examples are salt spray tests or a probe into the effects of edge rounding with regards to paint adhesion.



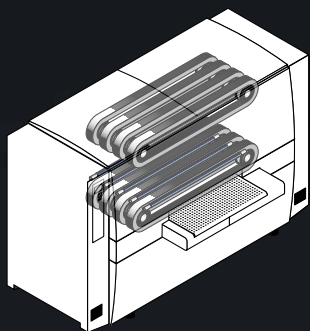
OUR OFFER – WE LOOK FORWARD TO YOUR VISIT: OUR MODERN PRACTICAL APPLICATIONS CENTER OFFERS INFORMATION ABOUT OUR EXTENSIVE RANGE OF PRODUCTS AND SERVICES. WATCH LIVE DEMONSTRATIONS OF ALL OF OUR TECHNOLOGIES AND TOOLS, AND ENJOY PERSONALIZED CONSULTATION BY OUR EXPERTS.



SBM-SERIES DOUBLE-SIDED DRY

The SBM series sets the standard for innovative sheet metal processing. In this dry process, both sides of the parts are processed simultaneously (all outside and inside edges), in a single pass. Double-sided processing offers highest productivity and superior results.

MACHINE FRAME / OPERATING METHOD



WORKING WIDTHS [MM]



MATERIAL THICKNESS [MM]

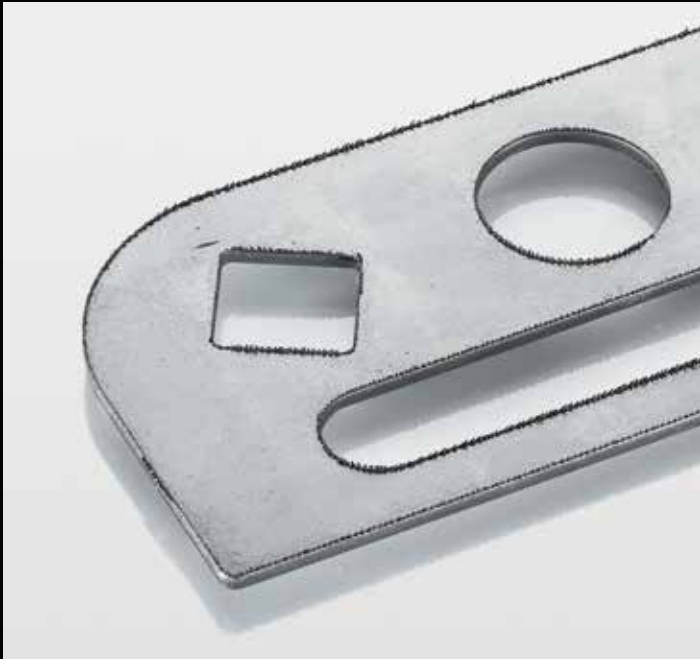


HIGHLIGHTS

- Wide range of applications: oxide removal, deburring, deslagging, edge rounding
- Dry processing for all metals, non-ferrous metals, and synthetic materials
- Double-sided processing in a single pass
- Processing time savings of up to 80% compared to manual processing
- Even wear of tools across the entire working width due to tool belts running perpendicular to feed direction
- Wide selection of available aggregates and aggregate pairings
- Fast and easy tool changes due to rapid-clamping system
- Low per-part costs
- Space saving, compact and modular design
- Intuitive operation - either manual or via touch screen

PROCESSING METHOD





DEBURRING - BEFORE



DEBURRING - AFTER



EDGE ROUNDING - BEFORE



EDGE ROUNDING - AFTER

SBM-SERIES APPLICATION EXAMPLES



OXIDE REMOVAL - BEFORE



OXIDE REMOVAL - AFTER



DESLAGGING - BEFORE

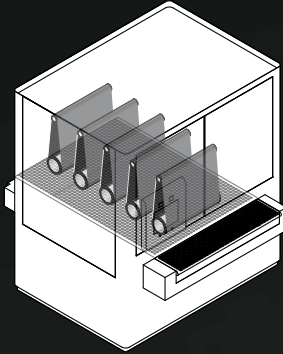


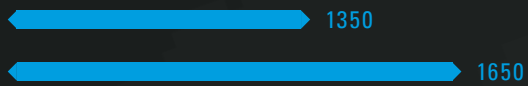
DESLAGGING - AFTER



SMD-SERIES SINGLE-SIDED DRY

The SMD series machines set the standard for superior surface finishing in a dry grinding process. These flexibly configurable dry grinding machines are true „multi-talents“ for deburring and surface finishing. They feature a modular design, and their innovative technology uses up to five processing aggregates, which can be flexibly outfitted to suit customers' varying needs.

MACHINE FRAME / OPERATING METHOD


WORKING WIDTHS [MM]


MATERIAL THICKNESS [MM]


HIGHLIGHTS

- Wide range of applications: oxide removal, deburring, deslagging, edge rounding, defined surface finishing
- Customized polishes / decorative finishing, as well as technical polishes available
- Dry, single sided processing for all metals, non-ferrous metals, and synthetic materials
- Fast and easy tool changes within a few minutes
- Low per-part costs
- Machine can be flexibly configured - available with up to five aggregates
- Intuitive operation via touch screen

PROCESSING METHOD




SMD-SERIES APPLICATION EXAMPLES



DEBURRING - BEFORE



DEBURRING - AFTER



OXIDE REMOVAL - BEFORE

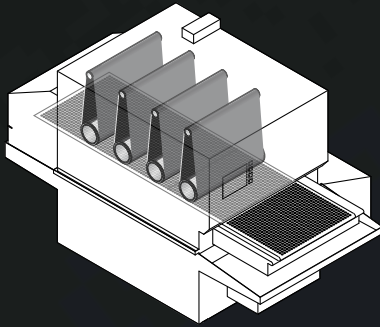


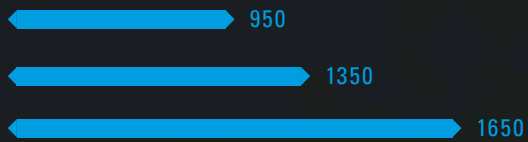
OXIDE REMOVAL - AFTER



SMW-SERIES SINGLE-SIDED WET

The SMW series machines set the standard for superior surface finishing in a wet grinding process. These flexibly configurable wet grinding machines offer precise deburring and defined surface finishing for high-quality parts. They feature a modular design, and their innovative technology uses up to four processing aggregates, which can be flexibly outfitted to suit customers' varying needs.

MACHINE FRAME / OPERATING METHOD


WORKING WIDTHS [MM]


MATERIAL THICKNESS [MM]

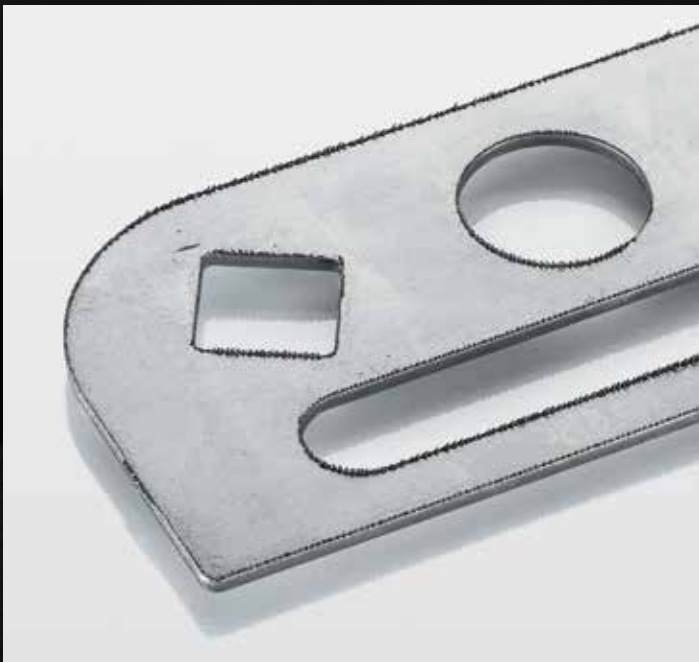

HIGHLIGHTS

- Wide range of applications: deburring, edge rounding, defined surface finishing
- Customized polishes / decorative finishing, as well as technical polishes available
- Wet, single sided processing for all metals, non-ferrous metals, and synthetic materials
- No cross contamination concerns and no retooling necessary with mixed material use
- No heating or thermal stress of the work pieces, which positively effects the bending process
- Fast and easy tool changes within a few minutes
- Low per-part costs
- Machine can be flexibly configurated - available with up to four aggregates
- Intuitive operation via touch screen

PROCESSING METHOD




SMW-SERIES APPLICATION EXAMPLES



DEBURRING - BEFORE



DEBURRING - AFTER

LISSMAC Maschinenbau GmbH
Lanzstraße 4
D-88410 Bad Wurzach
Germany
Phone +49(0)75 64/307-0
Fax +49(0)75 64/307-500
lissmac@lissmac.com
www.lissmac.com

BLUECOMPETENCE

Alliance Member

Partner of the Engineering Industry
Sustainability Initiative